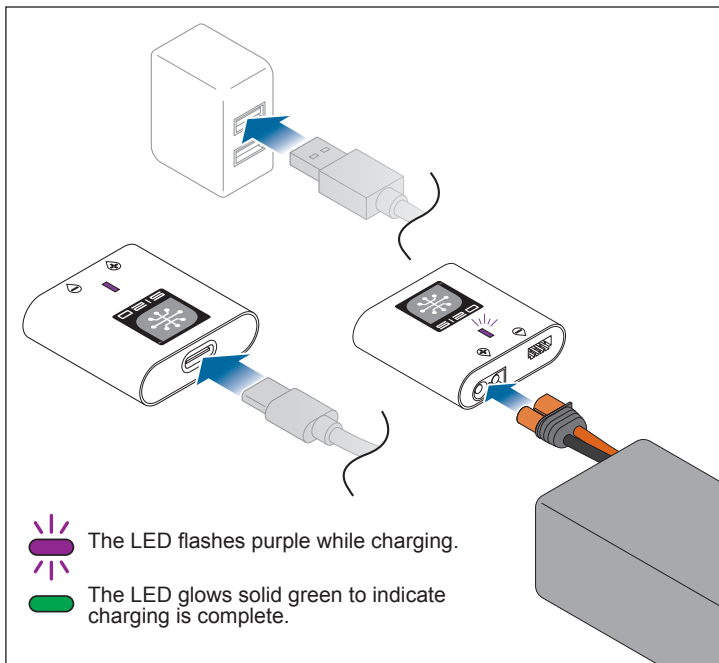


# QUICKSTART GUIDE

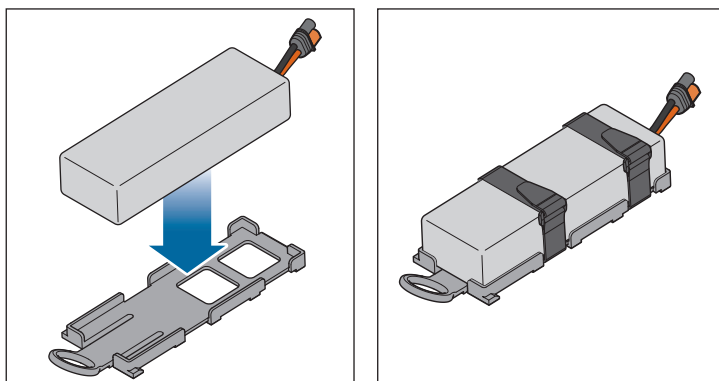


# **SONICWAKE 24**

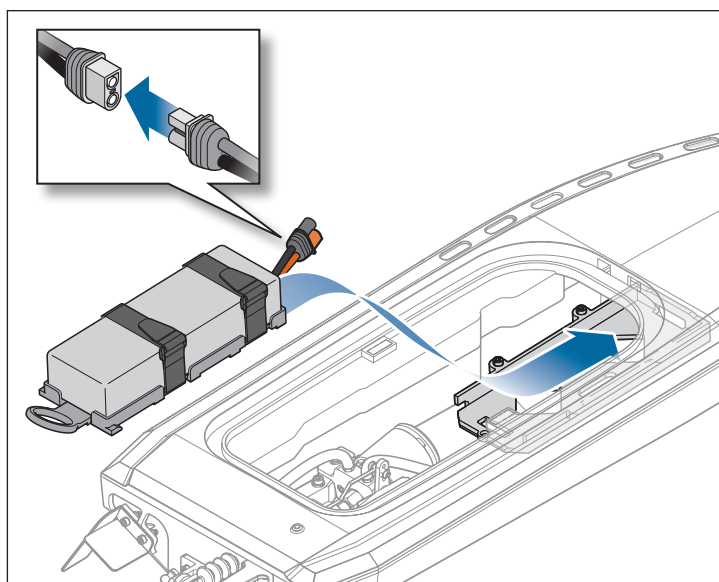
## 1. Charge the Battery



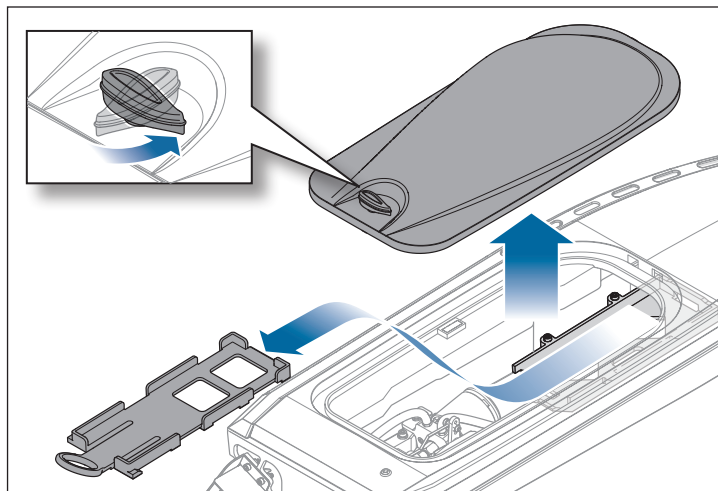
## 3. Install the Battery Into the SSL Battery Tray



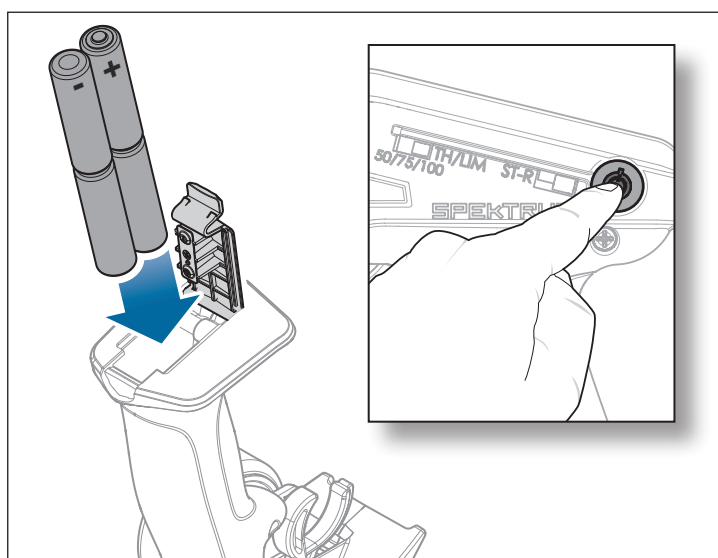
## 5. Install the Battery



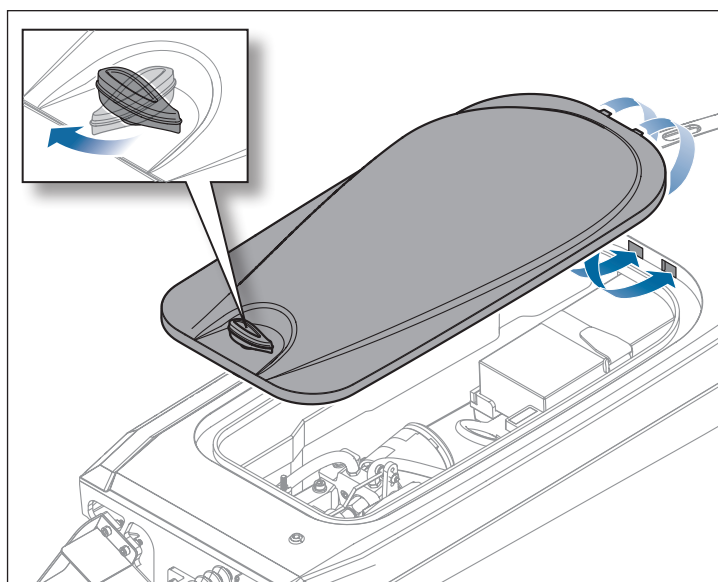
## 2. Remove the Canopy and SSL Battery Tray



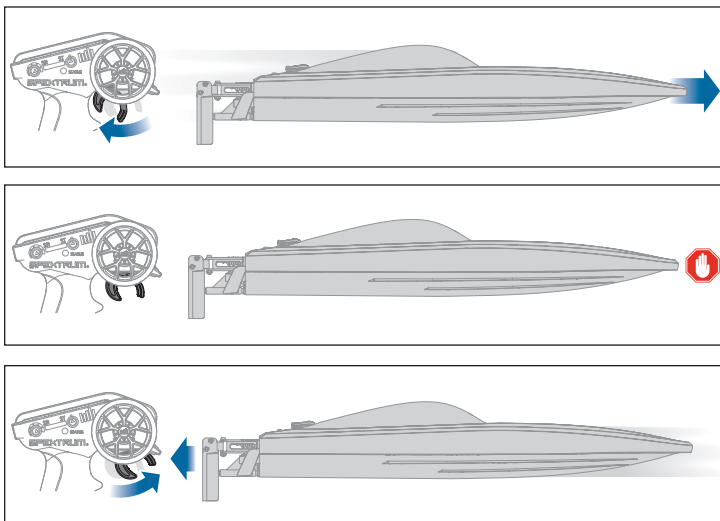
## 4. Power On



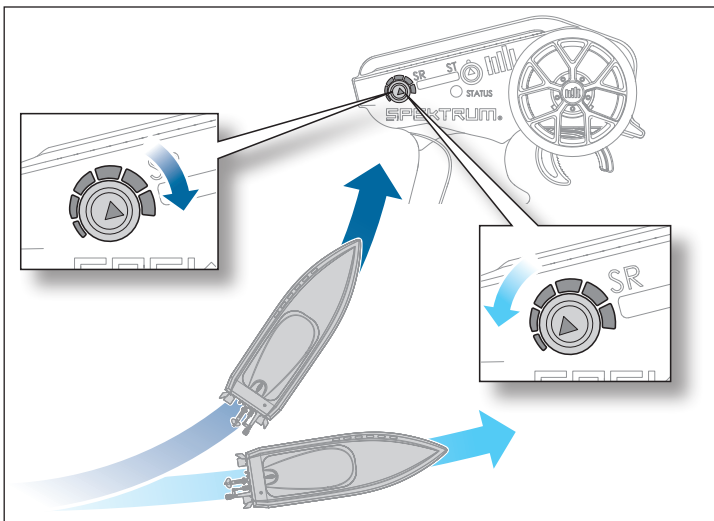
## 6. Install the Canopy



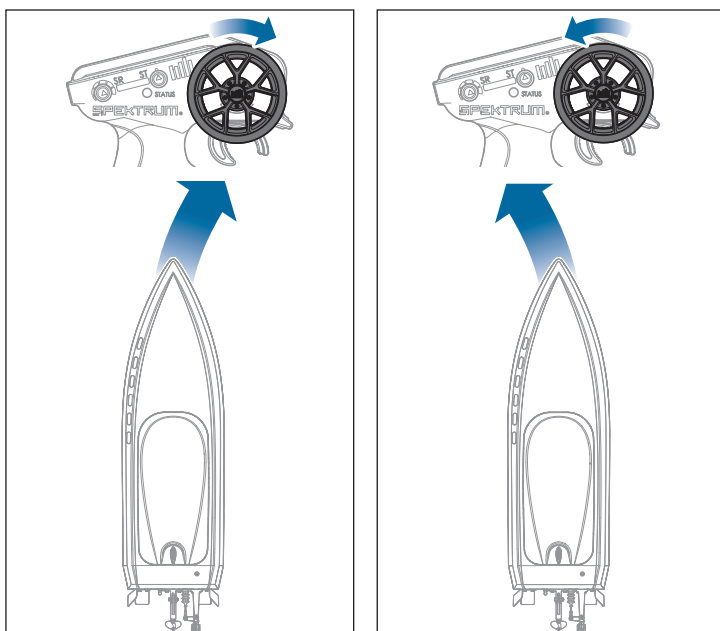
## 7. Throttle/Reverse



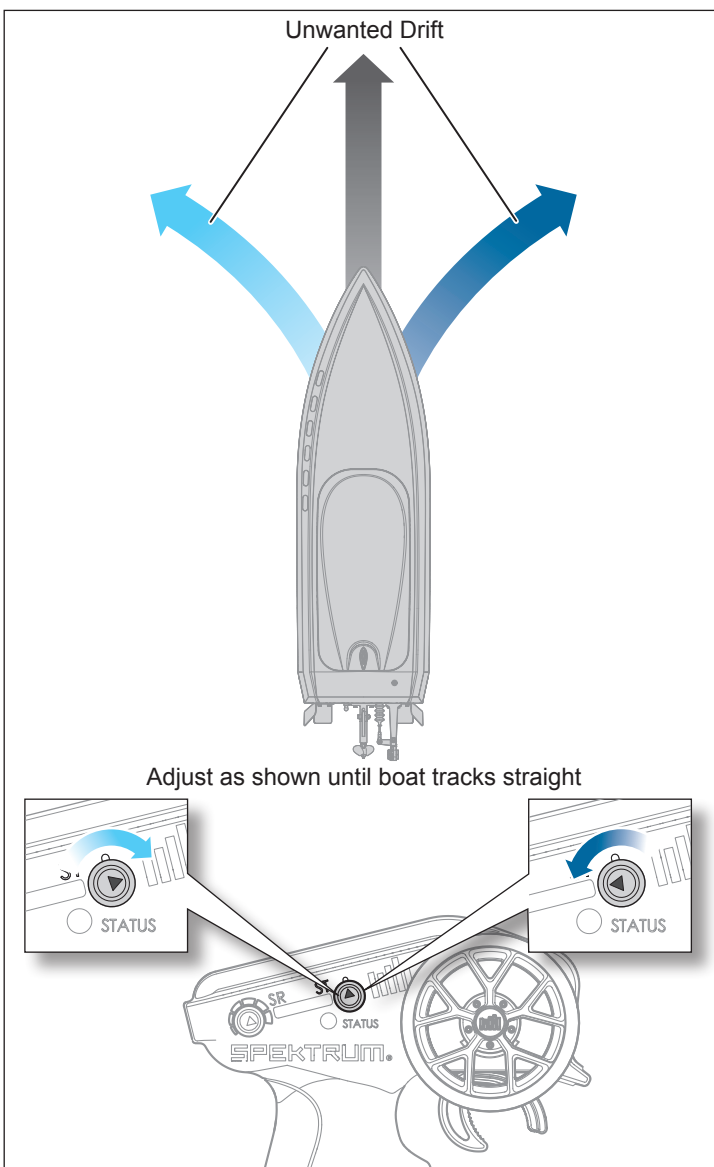
## 8. Steering Rate



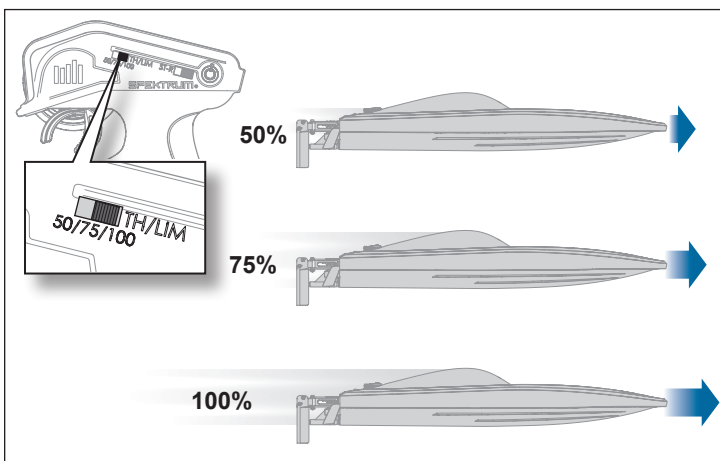
## 9. Steering



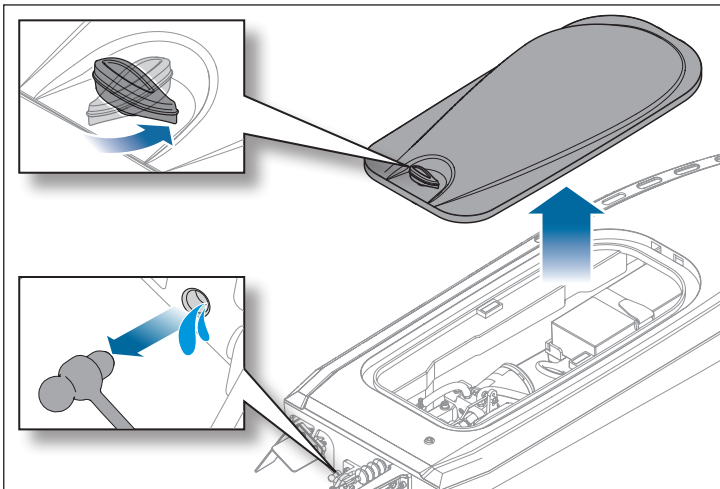
## 10. Steering Trim



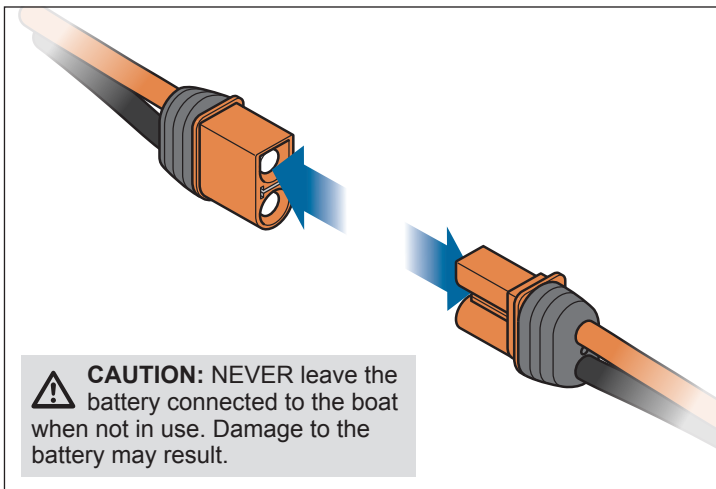
## 11. Throttle Limiter



## 12. Remove the Canopy

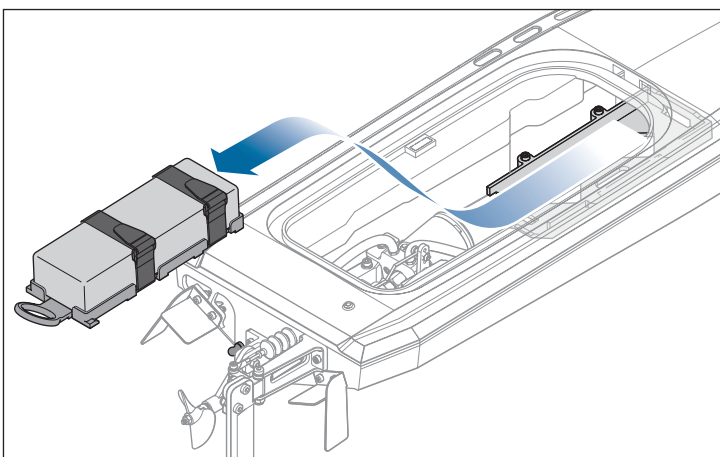


## 13. Disconnect the Battery

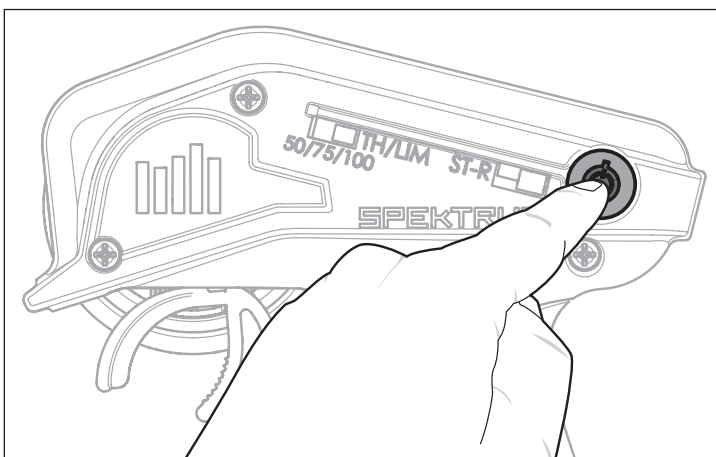


**CAUTION:** NEVER leave the battery connected to the boat when not in use. Damage to the battery may result.

## 14. Remove the Battery



## 15. Power Off the Transmitter



Scan the QR code and select the Support tab from the product page for the most up-to-date manual information.



**PRB-1992**

©2025 Horizon Hobby, LLC.

Pro Boat, SLT2, IC3, Firma, and the Horizon Hobby logo are trademarks or registered trademarks of Horizon Hobby, LLC. The Spektrum trademark is used with permission of Bachmann Industries, Inc.

All other trademarks or registered trademarks are property of their respective owners. Other patents pending.

Created 4/25

PRB-1992

1137950