



QUICKSTART GUIDE

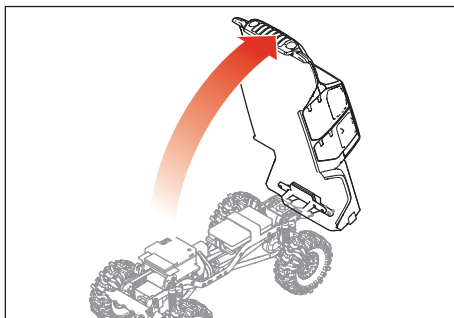


SCX24 Summit Racing Jeep® Gladiator 1:24 Scale 4x4 Rock Crawler RTR

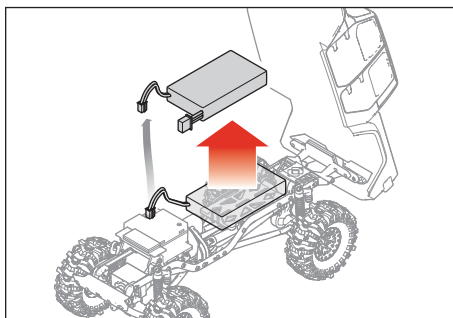
1131304
Created 2/25



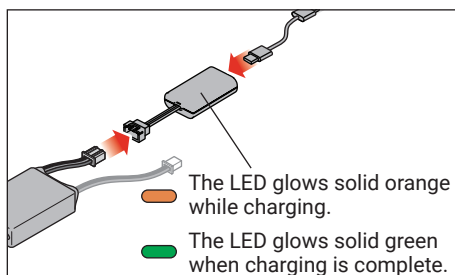
1. Open the Body



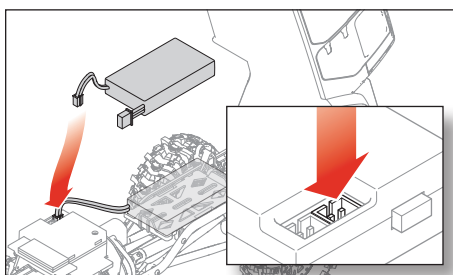
2. Remove the Vehicle Battery



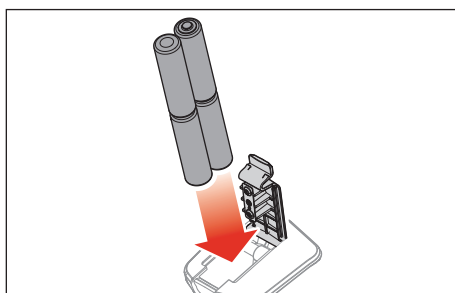
3. Charge the Vehicle Battery



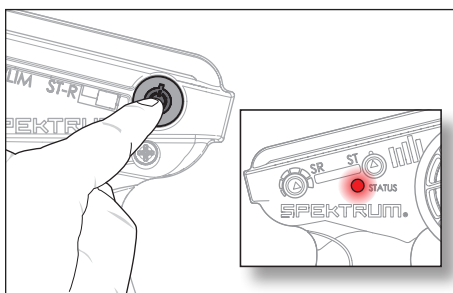
4. Reinstall the Vehicle Battery



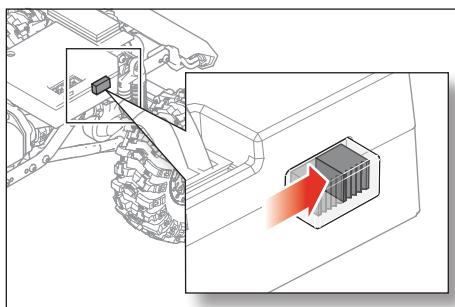
5. Install the Transmitter Batteries



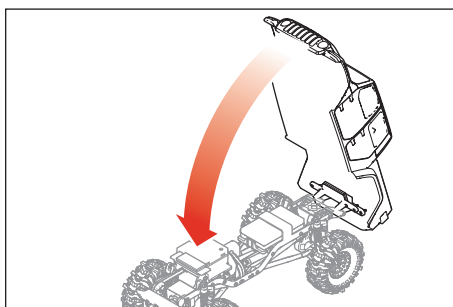
6. Power On the Transmitter



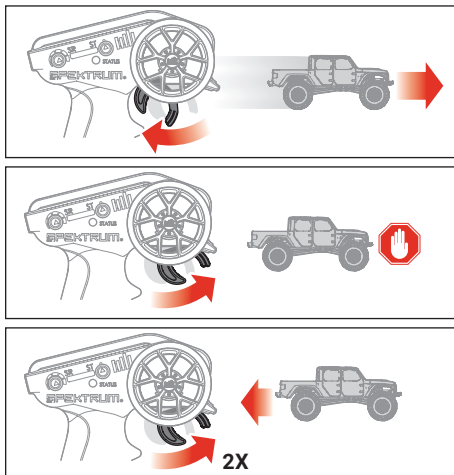
7. Power On the Vehicle



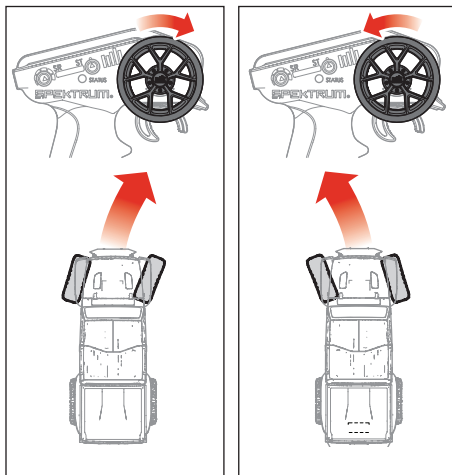
8. Reinstall the Body



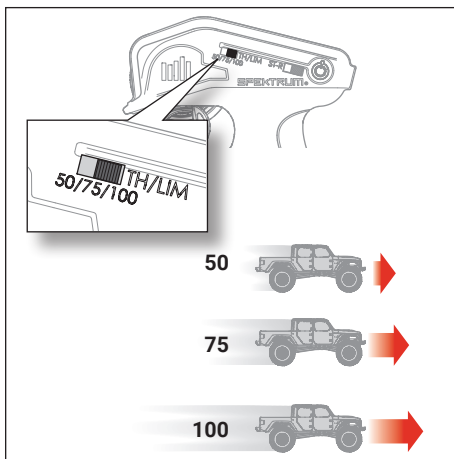
9. Throttle/Brake



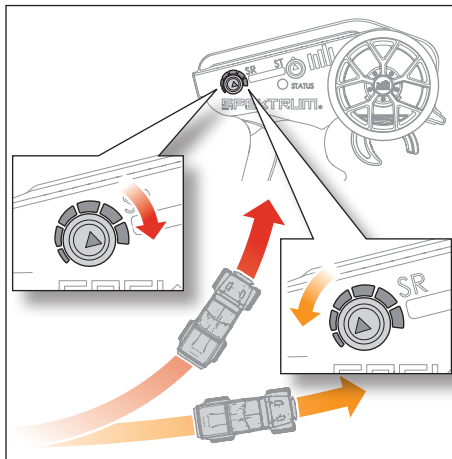
10. Steering



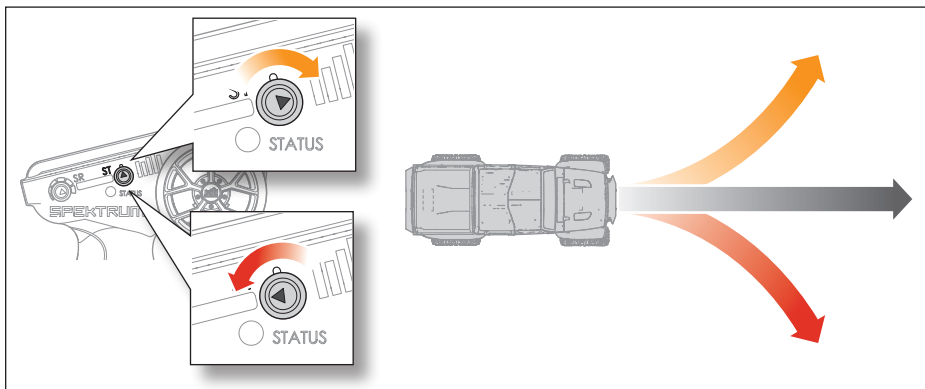
11. Throttle Limiter



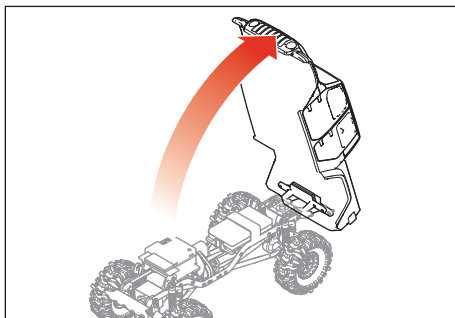
12. Steering Rate



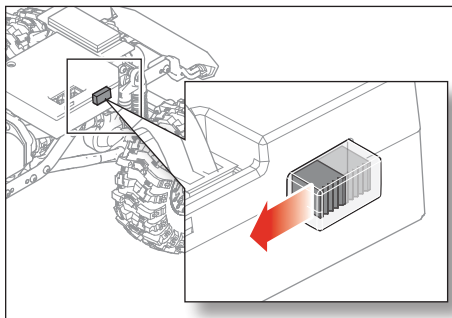
13. Steering Trim



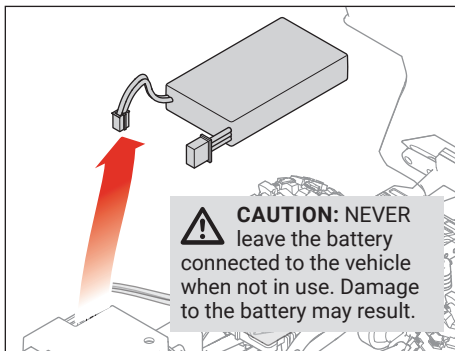
14. Open the Body



15. Power Off the Vehicle



16. Disconnect the Vehicle Battery



CAUTION: NEVER leave the battery connected to the vehicle when not in use. Damage to the battery may result.

17. Power Off the Transmitter

